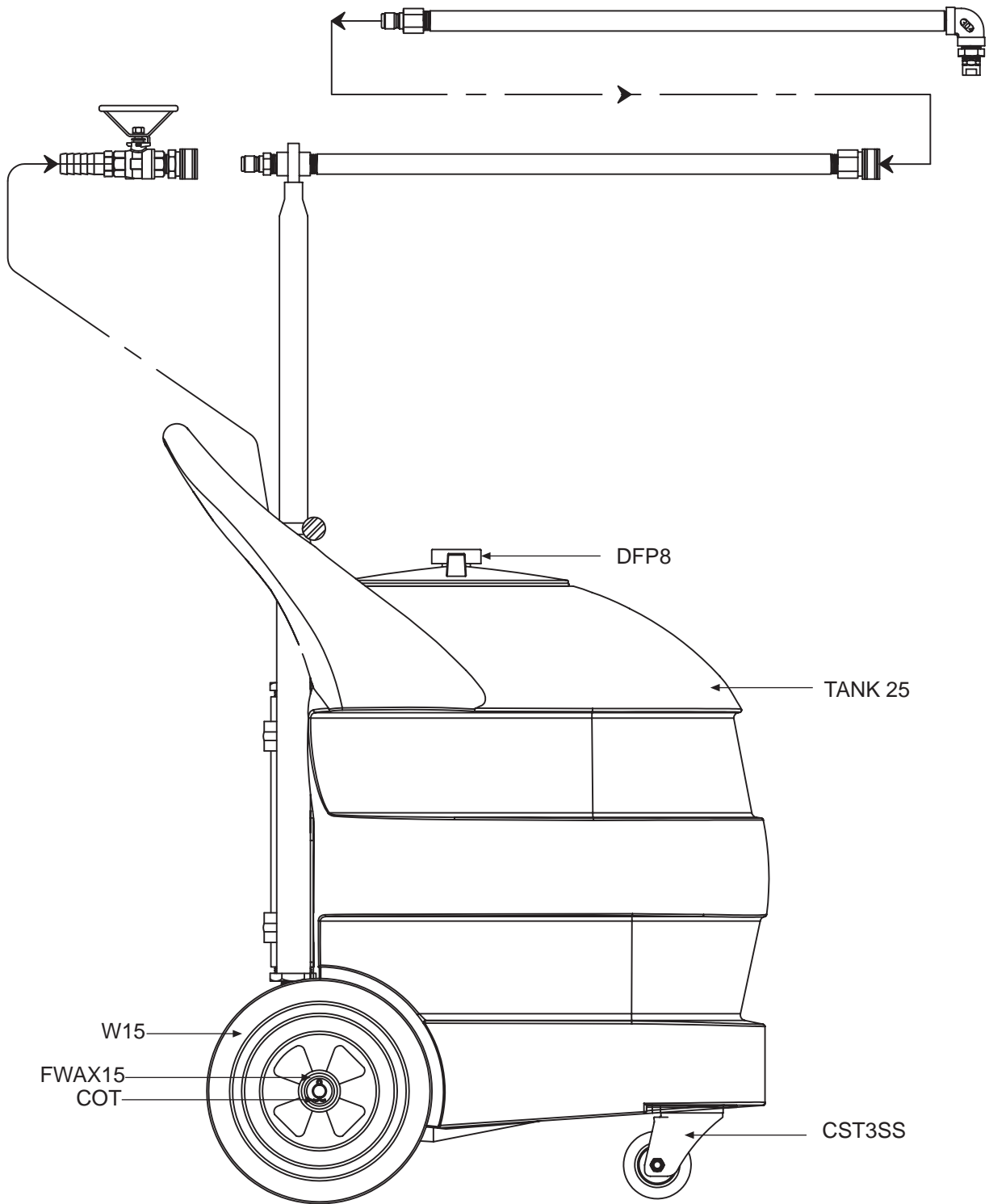


# FI-25 BFS



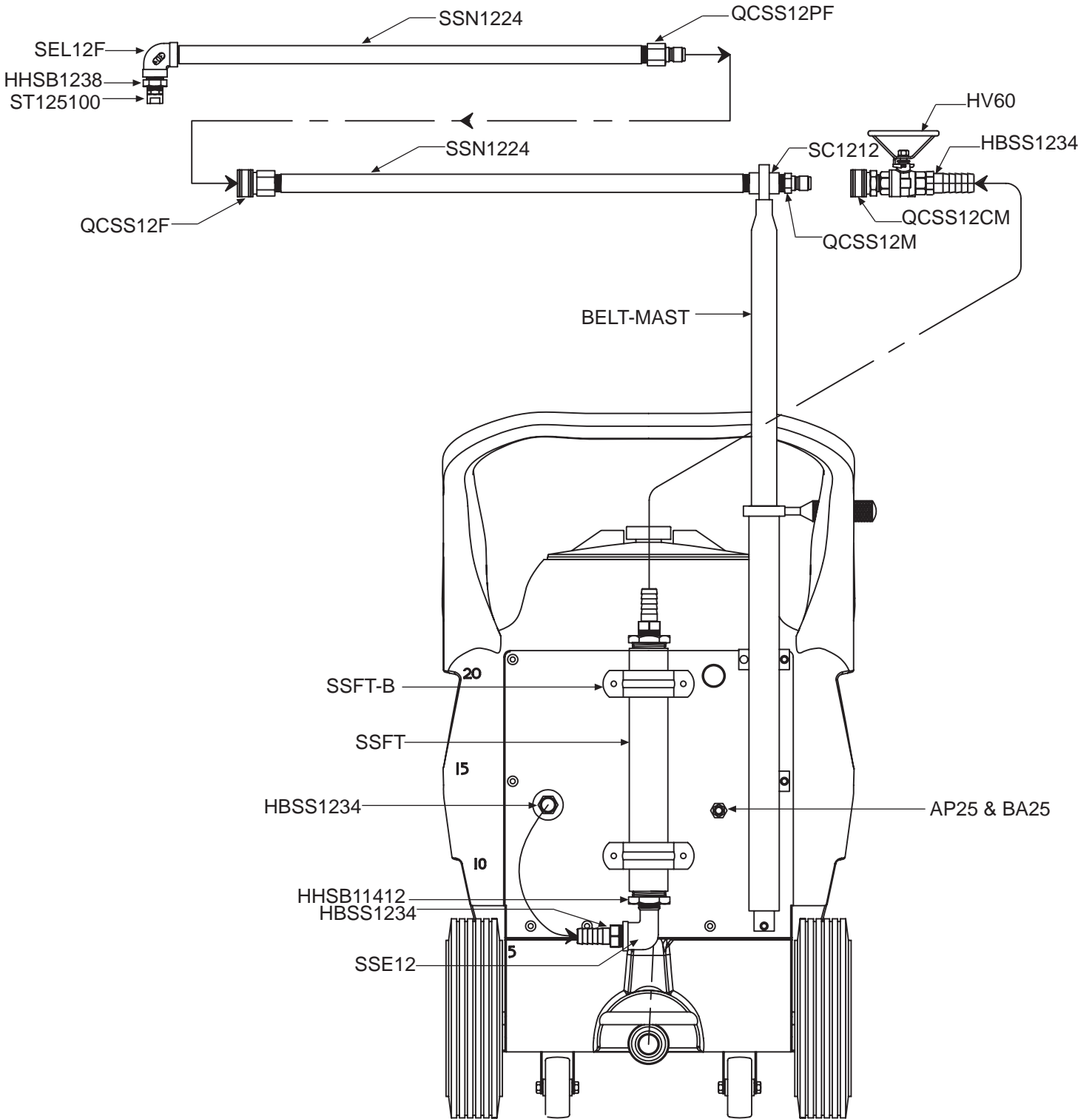
**OWNER'S MANUAL**

# FI-25 BFS



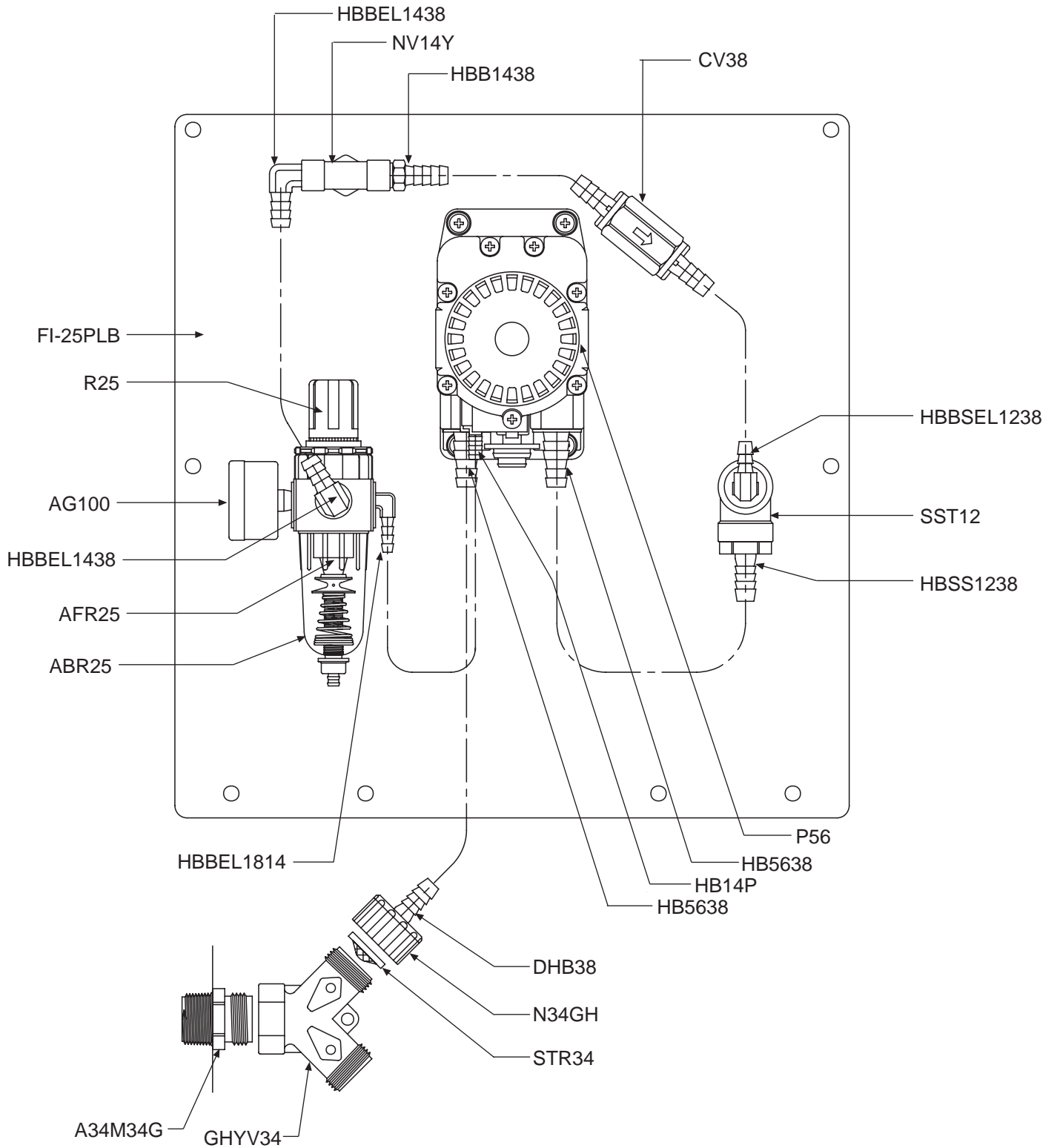
**SIDE VIEW**

# FI-25 BFS



REAR VIEW

# FI-25 BFS



**INSIDE VIEW - CONTROL PANEL**

# FI-25 BFS

PART NO.	DESCRIPTION
A34M34G	3/4 GHT X 3/4 MPT ADAPTOR
ABR25	ORIGA BOWL W/SEMIAUTO DRAIN
AFR25	ORIGA FILTER ELEMENT
AG100	AIR GUAGE
AP25	PLUG 1/4 NPTM AIR FITTING - BRASS
BA25	MALE/FEMALE ADAPTER 1/4 X 1/4
BELT-MAST	EXTENDABLE MAST FOR TANK 25 FOR BELT FOAMING
COT	COTTER PIN
CST3SS	3IN S.S. CASTER
CV38	PVC CHECK VALVE 3/8 BARBS
DFP8	8in THREADED CAP W/RING AND VENT
DHB38	3/4 FLAT SEAT 3/8 HOSE BARB
FWAX 15	FLAT AXLE WASHER
GHYV34	3/4in GARDEN HOSE BALL WYE VALVE
HBB1438	BRASS 1/4 MPT X 3/8 HOSE BARB
HB5638	HOSE BARB FOR P56 PUMP
HB14P	1/4in BRASS HB AIR FITTING
HBSS1234	STAINLESS HOSE BARB 1/2 X 3/4
HBEL1438	3/8 BRASS HOSE BARB X 1/4 PIPE ELB
HBEL1814	1/8 MPT X 1/4 HOSE BARB BRASS 90DEG
HBSEL1238	304 S.S. 1/2in MPT BY 3/8in H.B. ELBOW
HBSS1234	STAINLESS HOSE BARB 1/2 X 3/4
HHSB1238	HEX HEAD S.S. REDUCER BUSHING 1/2in X 3/8
HHSB11412	HEX HEAD STAINLESS BUSHING 1 1/4IN BY 12IN
HV60	1/2in STAINLESS BALL VALVE - w/ WELDED NUT
N34GH	3/4 GARD HSE SWIVEL NUT
NV14Y	FLOW CONTROL VALVE
P56	5700 SANTO PUMP
PL25-N	PLATE FOR NEW STYLE FI-25
QCSS12CM	S.S. NON CHECK 1/2in Q.C. - MPT
QCSS12F	S.S. NON CHECK 1/2in Q.C. - FPT
QCSS12M	S.S. NON CHECK 1/2in Q.C. PLUG - MPT
QCSS12PF	S.S. NON CHECK 1/2in Q.C. PLUG - FPT
R25	FILTER/REGULATOR COMPLETE (INCLUDES ABR25 & AFR25)
SC1212	S.S. COUPLER 1/2in BY 1/2in
SEL12F	S.S. ELBOW 1/2in FPT X 1/2in FPT
SSE34	S.S. STREET ELBOW 3/4in
SSN1224	1/2in X 24in S40 304 STAINLESS STEEL NIPPLE
SSFT-B	STAINLESS STEEL FOAM TUBE BRACKET
SSFT	Stainless Steel Foam Tube 1 1/2in
SST12	1/2in FPT 304 S.S. TEE
ST125100	VEEJET NOZZLE - BRASS - 3/8in - 125100
STR34	1in SEAL/STRAINER FOR 3/4 GH FITTINGS
TANK 25	25 GALLON CLEANING TANK
W15	WHEEL

# FI-25 BFS

## SAFETY INSTRUCTIONS

1. ALWAYS WEAR SAFETY GOGGLES AND PROTECTIVE GLOVES WHILE OPERATING FOAM UNIT.
2. AVOID CONTACT OF CLEANING AGENT WITH SKIN AND EYES. IF CONTACT OCCURS RINSE AFFECTED AREA WITH WATER FOR 15 MINUTES AND GET MEDICAL ATTENTION IF NEEDED.
3. AFTER USE, RELIEVE ALL REMAINING PRESSURE IN THE SYSTEM BY UNPLUGGING THE AIR LINE FROM THE UNIT (ITEM# 9) AND OPENING THE DISCHARGE BALL VALVE (ITEM# 5).
4. NEVER POINT THE DISCHARGE WAND AT ANYONE.
5. BE SURE TO FLUSH THE UNIT WITH FRESH WATER FOR 5 MINUTES WHEN SWITCHING FROM AN ALKALINE TO AN ACID OR AN ACID TO AN ALKALINE.

## OPERATION INSTRUCTIONS

1. FILL THE DRUM WITH COMBINATION OF WATER AND FOAMING CHEMICAL, 4 - 6 OZ. PER GALLON OF WATER IS RECOMMENDED.
2. WITH BALL VALVE (ITEM# 5) IN THE CLOSED POSITION, PLUG AN AIR LINE INTO THE AIR FITTING (ITEM# 9).
3. SLOWLY OPEN THE BALL VALVE (ITEM# 5).
4. ADJUST THE **WET FOAM / DRY FOAM** VALVE (ITEM# 18) TO DESIRED WETNESS OR DRYNESS OF FOAM FOLLOWING THE STEPS BELOW:
  - A. CLOSE VALVE COMPLETELY IN CLOCKWISE DIRECTION.
  - B. OPEN VALVE IN COUNTER-CLOCKWISE DIRECTION 3 COMPLETE TURNS.
  - C. CONTINUE TO OPEN VALVE IN 1/4 TURN INCREMENTS ALLOWING 30 SECONDS BETWEEN ADJUSTMENTS UNTIL PROPER CONSISTENCY OF FOAM IS ACHIEVED.
  - D. IF THE VALVE IS OPEN TOO FAR IT CAN CAUSE THE PUMP TO STALL OUT. IF THIS OCCURS BEGIN AGAIN WITH STEP A.
5. AFTER FILLING FOAM UNIT WITH PRE-MIXED SOLUTION POSITION CLOSE TO THE BELT YOU WILL BE CLEANING AND LOCK THE FRONT CASTER TO KEEP THE FOAMER IN PLACE. POSITION THE BOOM IN THE MIDDLE OF THE BELT AND ADJUST THE HEIGHT SO THAT THE FOAM PATTERN IS THE PROPER WIDTH OF THE BELT. WHEN THE BELT IS MOVING, TURN THE FOAMER BALL VALVE TO THE OPEN POSITION TO BEGIN FOAMING

## AFTER USE INSTRUCTIONS

1. IT IS RECOMMENDED TO RUN A GALLON OF FRESH WATER THROUGH THE UNIT AFTER EACH USE. WITH THE DISCHARGE BALL VALVE (ITEM# 5) OPEN RUN THE UNIT UNTIL THE GALLON OF WATER HAS GONE THROUGH THE UNIT AND DISCHARGED OUT OF THE DISCHARGE HOSE.
2. DISCONNECT THE AIR LINE FROM THE AIR FITTING (ITEM# 9) AND RELIEVE ANY REMAINING PRESSURE IN THE SYSTEM BY HAVING THE DISCHARGE BALL VALVE (ITEM# 5) IN THE OPEN POSITION.
3. CLOSE THE DISCHARGE BALL VALVE (ITEM# 5) WHEN ALL THE PRESSURE IS RELIEVED FROM THE SYSTEM.

## ACCEPTABLE PRODUCTS

- ALKALINE CLEANERS
- CAUSTIC CLEANERS
- SANITIZERS
- ACIDS

## UNACCEPTABLE PRODUCTS

- D-LIMONENE (OK WITH VITON PUMP ONLY)
- ALL HYDROCARBONS

# FI-25 BFS

## TROUBLE SHOOTING INSTRUCTIONS

1. CHECK FOR PROPER AIR PRESSURE (60 PSI OR MORE INTO UNIT, 60 PSI ON AG100 (ITEM# 37)).
2. CHECK AIR INLET FILTER BOWL (ITEM# 34) FOR DEBRIS SUCH AS WATER, OIL, OR RUST PARTICLES. CLEAN BY PULLING DOWN ON THE BOTTOM OF THE FILTER.
3. CHECK FOR PLUGGED STRAINER (ITEM# 31). REPLACE STRAINER IF NECESSARY, **STRAINER MUST BE USED**.
4. IF **WET FOAM/DRY FOAM** VALVE (ITEM# 18) IS OPEN TOO FAR THE PUMP WILL NOT CYCLE PROPERLY DUE TO LACK OF AIR PRESSURE. IF THIS OCCURS, RESET VALVE AS DESCRIBED IN OPERATING INSTRUCTION #4.
5. MAKE SURE PROPER FOAMING CHEMICAL AND CONCENTRATION IS BEING USED.
6. IF AIR PASSES THROUGH THE PUMP (ITEM# 24) WITHOUT CYCLING, REPLACE PUMP.
7. IF FOAM SOLUTION BACKS UP INTO AIR FILTER (ITEM# 34) THE CHECK VALVE (ITEM# 20) NEEDS TO BE REPLACED.
8. IF FOAM COMES OUT WET NO MATTER WHERE THE **WET FOAM/DRY FOAM** VALVE IS POSITIONED THE CHECK VALVE (ITEM# 20) MAY NEED TO BE REPLACED.
9. IF UNIT FOAMS AT A REDUCED PRESSURE:
  - A. CHECK THE AIR SUPPLY INTO THE UNIT. IF IT IS LOW, TURN THE FOAM UNIT OFF UNTIL THE COMPRESSOR CAN CATCH UP.
  - B. IF THE AIR SUPPLY IS 60 PSI OR ABOVE, CHECK THE AIR GAUGE (ITEM# 37) WHICH SHOULD READ NEAR 60 PSI. IF THE GAUGE IS MORE OR LESS THAN 60 PSI, ADJUST THE PRESSURE BY TURNING THE KNOB ON THE TOP OF THE REGULATOR (ITEM# 38).
  - C. IF BOTH OF THE ABOVE ARE O.K., THE STAINLESS STEEL MIXING MESH COULD BE PLUGGED. REMOVE AND CLEAN IT FOLLOWING THE INSTRUCTIONS BELOW:
    1. BE SURE THE FOAM UNIT IS NOT PLUGGED INTO AN AIR SUPPLY AND BE SURE TO RELIEVE ALL STORED PRESSURE IN THE UNIT BY HAVING THE DISCHARGE BALL VALVE (ITEM# 5) IN THE OPEN POSITION.
    2. REMOVE THE HOSE BARB (ITEM# 8) FROM THE TEE (ITEM# 22).
    3. REMOVE THE SCREEN AND THE MIXING MESH FROM INSIDE THE TEE (ITEM# 22).
    4. CLEAN ANY PARTICLES FROM THE MIXING MESH AND THE SCREEN.
    5. REPLACE THE MIXING MESH THEN THE SCREEN INTO THE BACK OF THE TEE (ITEM# 22) AND SCREW THE HOSE BARB (ITEM# 8) BACK INTO THE TEE (ITEM# 22). (IT IS RECOMMENDED TO USE A PIPE THREAD SEALANT WHEN REINSTALLING THE HOSE BARB INTO THE TEE). **NOTE:** IF THE MIXING MESH HAS A LOT OF FOREIGN PARTICLES IN IT, MAKE SURE THE STRAINER IS STILL IN PLACE (ITEM# 31).