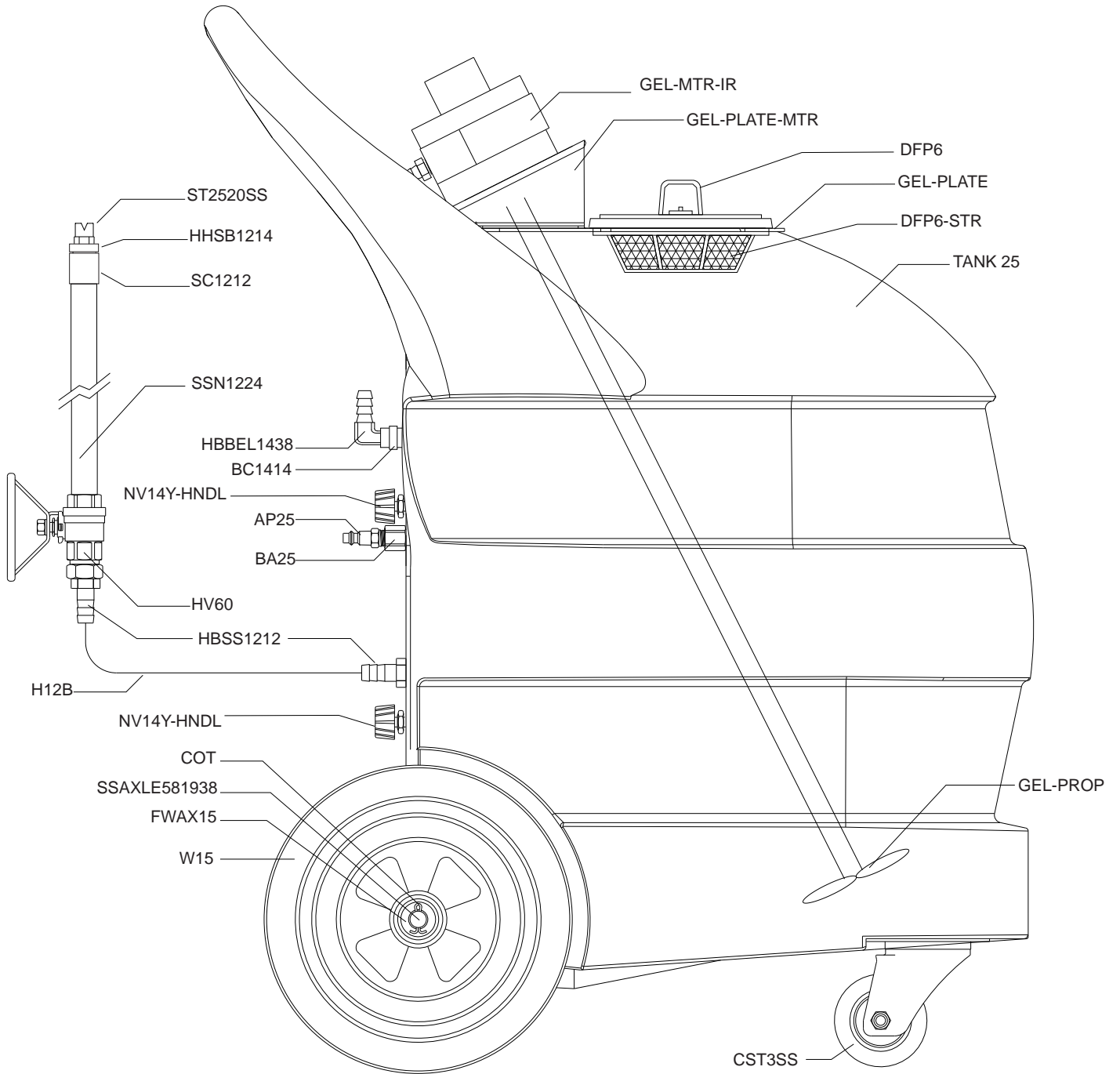


GEL-IT 25



OWNER'S MANUAL

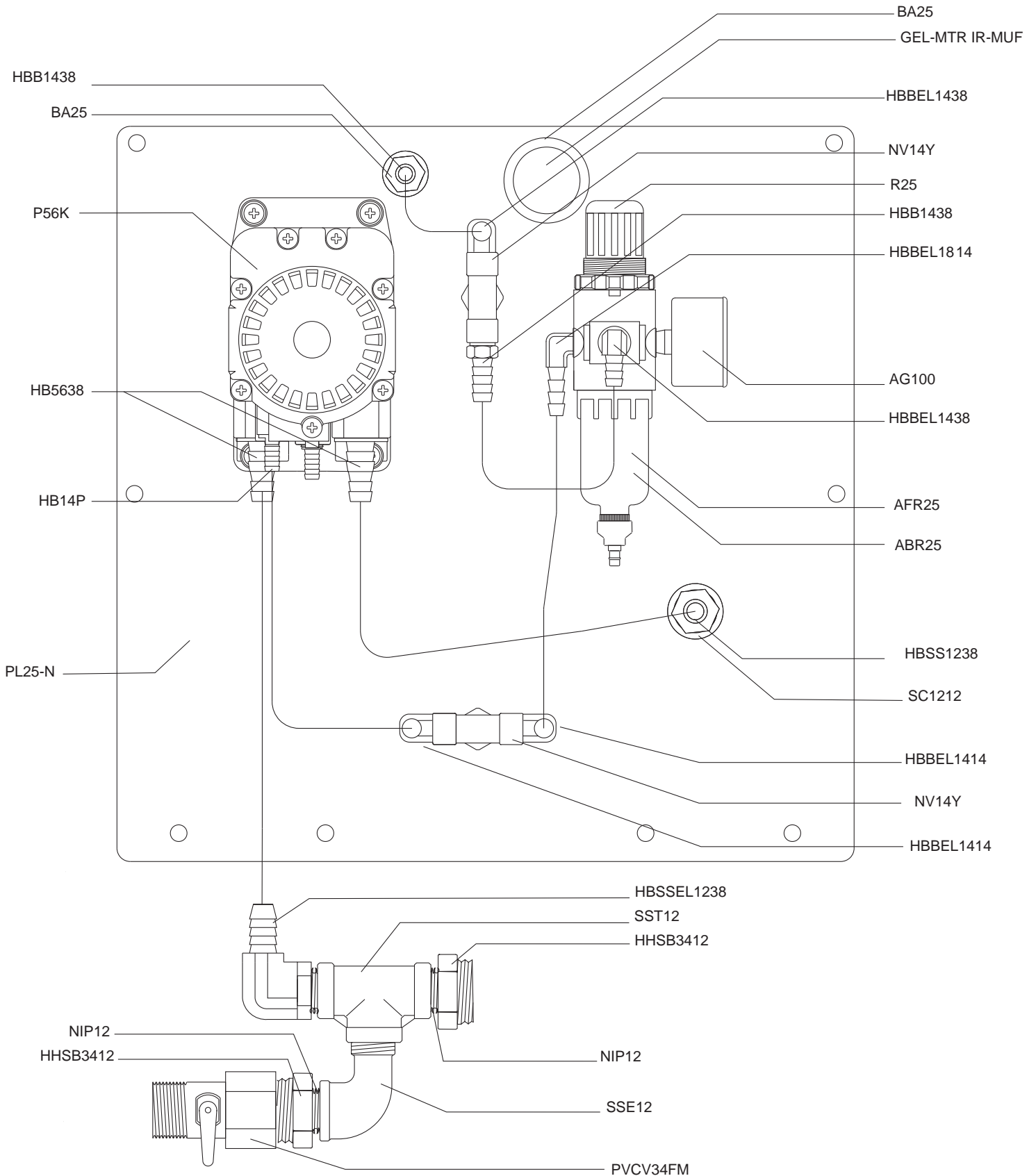
GEL-iT 25



SIDE VIEW

GEL-iT 25

INSIDE VIEW - CONTROL PANEL



GEL-iT 25

PARTS LIST

PART NO.	DESCRIPTION
AG100	1.5in DRY MODEL 20 DUAL SCALE GAUGE
AP25	PLUG 1/4 NPTM AIR FITTING - BRASS
BA25	MALE/FEMALE ADAPTER 1/4 X 1/4
BC1414	BRASS PIPE COUPLING 1/4in
COT	1/8 X 1 COTTER PIN 18-8 S/S
CST3SS	3in S.S. SWIVEL CASTER W/O LOCK
CST3SS-L	3in S.S. SWIVEL CASTER WITH LOCK
DFP6	6 INCH THREADED CAP FOR 10 GALLON UNIT
DFP6-STR	STRAINER FOR THE DFP6 CAP AND LID
GEL-MTR-IR	GEL MOTOR - INGERSOLL RAND - 0.3HP - 4.5HP - LUBE FREE
GEL-PLATE	TOP PLATE FOR GEL-IT 25 w/ ANGLED PLATE FOR GEL-MTR-IR
GEL-PLATE-MTR	PLATE FOR GEL-IT 25 - ANGLED TOP PLATE FOR GEL-MTR-IR
GEL-PROP	GEL PROPELLER 4"SS - 25" SHAFT & 1/2" KEYED COUPLER - WELDED
H12B	1/2in BLUE GENERAL SERVICE HOSE
HBB1438	BRASS 1/4 MPT X 3/8 HOSE BARB
HBBEL1414	1/4 MPT X 1/4 HOSE BARB BRASS 90 DEG
HBBEL1438	3/8 BRASS HOSE BARB X 1/4 PIPE ELB
HBBEL1817	1/8in ELBOW HOSE BARB BY .170
HBSS1212	STAINLESS HOSE BARB 1/2 X 1/2
HBSS1238	STAINLESS HOSE BARB 1/2mpt X 3/8 barb Tariff 8479.90.9496
HBSSEL1238	304 S.S. 1/2in MPT BY 3/8in H.B. ELBOW
HHSB3412	HEX HEAD STAINLESS BUSHING - 3/4in BY 1/2in
HV60	1/2in STAINLESS BALL VALVE - w/ WELDED NUT
NIP12	STAINLESS STEEL CLOSE NIPPLE 1/2in MPT
NV14Y	FLOW CONTROL VALVE
P56K	5700 PUMP WITH KAIFZ SEALS
PL25-N	PLATE FOR NEW STYLE FI-25 - TANK 25
PVCV34FM	PVC VALVE 3/4in FPT X 3/4in MPT
PW1224	1/2in BLACK POLY PRO X 24in - SCH 120 - 1/2in MPT OF & 1/4in FPT
R25	AIR REGULATOR - SILVER COLOR - 1/4fpt TWO PORT 1/8fpt TWO PORT
SC1212	S.S. COUPLER 1/2in BY 1/2in
SN1212	1/2in HEX STAINLESS STEEL NIPPLE
SSAXLE581938	S.S. AXLE - 5/8in BY 1 9/8in - 304
SSE12	STREET ELBOW 1/2in - 316 S.S.
SSP25	STAINLESS STEEL PLATE FOR FI-25
SST12	1/2in FPT 304 S.S. TEE
ST2520SS	VEEJET NOZZLE, S.S. 2520
TANK 25	25 GALLON CLEANING TANK
W15	15 GALLON UNIT WHEEL

GEL-iT 25

WARNING

Avoid Personal Injury



1. Always wear protective clothing, gloves, and eyewear while operating foam unit (MA300, MA305).
2. Avoid contact of cleaning agent with skin and eyes. If contact occurs, rinse affected area with water for 15 minutes and get medical attention if needed.
3. Follow safety instructions of chemical manufacturers (MSDS).
4. After use, to prevent accidental discharge, relieve all remaining pressure in the system by unplugging the air line from the unit and opening the discharge ball valve.
5. Never point the discharge wand at anyone.
6. After relieving the pressure from the unit, store the ball valve in the closed position.

CAUTION

Avoid Equipment Damage

1. Only use clean, dry air. Air must be filtered and free of moisture or pump life will be diminished. If needed, install optional air dryer, AD14, before unit.
2. Do not use an air lubricator before the unit.
3. Be sure to flush the unit with fresh water for 5 minutes when switching from an alkaline to an acid or an acid to an alkaline.
4. Do not exceed a fluid temperature of 100°F. Higher temperatures will damage the unit.
5. Refer to local plumbing codes.

OPERATION INSTRUCTIONS

1. Fill the tank with the desired level of chemical.
2. Close ball valve (HV60).
3. Plug an air line into the air fitting (AP25). Note: the pump will begin to operate until pressure has equalized.
4. Open the "MIXING SPEED" valve (NV14Y) counter-clockwise, to begin to mix the chemical into a gel. Open until desired speed has been reached.
5. To begin spraying the gel product, slowly open the ball valve (HV60) while pointing the wand in a safe direction.
6. Adjust the "Pump Speed" valve (NV14Y) to the desired flow.
 - A. Close valve completely in clockwise direction.
 - B. Open valve in counter-clockwise direction 3 complete turns.
 - C. Continue to open valve in 1/4 turn increments allowing 30 seconds between adjustments until proper setting is achieved.
 - D. If the "MIXING SPEED" valve is open too far it can cause the pump to stall out. If this occurs close "MIXING SPEED" valve until pump begins to cycle at desired rate.
7. To stop spraying, close the ball valve (HV60).

AFTER USE INSTRUCTIONS

1. It is recommended to run a couple of gallons of fresh water through the unit after each use. With the discharge ball valve (HV60) open, run the unit until the gallon of water has gone through the unit and discharged out of the discharge hose.
2. Disconnect the air line from the air fitting (AP25) and relieve any remaining pressure in the system by having the discharge ball valve (HV60) in the open position.
3. Close the discharge ball valve (HV60) when all the pressure is relieved from the system.

GEL-iT 25

TROUBLE SHOOTING INSTRUCTIONS

1. MAKE SURE CHEMICAL AND GEL PRODUCT HAVE BEEN THOROUGHLY MIXED.
2. REMOVE ALL CLUMPS OF GEL POWDER.
3. REMOVE ALL DEBRIS FROM TANK
4. CHECK FOR PROPER AIR PRESSURE (60 PSI OR MORE SUPPLIED TO THE UNIT).
5. CHECK AIR INLET FILTER BOWL FOR DEBRIS SUCH AS WATER, OIL, OR RUST PARTICLES. CLEAN BY PULLING DOWN ON THE BOTTOM OF THE FILTER.
6. CHECK FOR PLUGGED STRAINER. REPLACE STAINER IF NECESSARY, .
7. IF "MIXING SPEED" VALVE IS OPEN TOO FAR THE PUMP WILL NOT CYCLE PROPERLY DUE TO LACK OF AIR PRESSURE. IF THIS OCCURS, CLOSE VALVE UNTIL PUMP BEGINS TO CYCLE PROPERLY.
- 8.. MAKE SURE PROPER CHEMICAL AND CONCENTRATION IS BEING USED.
9. IF AIR PASSES THROUGH THE PUMP WITHOUT CYCLING, REPLACE PUMP.
10. IF SOLUTION BACKS UP INTO AIR FILTER THE PUMP NEEDS TO BE REPLACED.
11. IF FOAM COMES OUT WET NO MATTER WHERE THE VALVE IS POSITIONED THE CHECK VALVE MAY NEED TO BE REPLACED.
12. IF UNIT SPRAYS AT A REDUCED PRESSURE:
 - A. CHECK THE AIR SUPPLY INTO THE UNIT. IF IT IS LOW, TURN THE GEL UNIT OFF UNTIL THE COMPRESSOR CAN CATCH UP.
 - B. IF THE AIR SUPPLY IS 60 PSI OR ABOVE, CHECK THE AIR GAUGE THIS SHOULD READ NEAR 60 PSI. IF THE GAUGE IS MORE OR LESS THAN 60 PSI, ADJUST THE PRESSURE BY TURNING THE KNOB ON THE TOP OF THE REGULATOR

ACCEPTABLE PRODUCTS

- ALKALINE CLEANERS
- CAUSTIC CLEANERS
- SANITIZERS
- ACIDS

UNACCEPTABLE PRODUCTS

- D-LIMONENE (OK WITH VITON PUMP ONLY)
- ALL HYDROCARBONS